

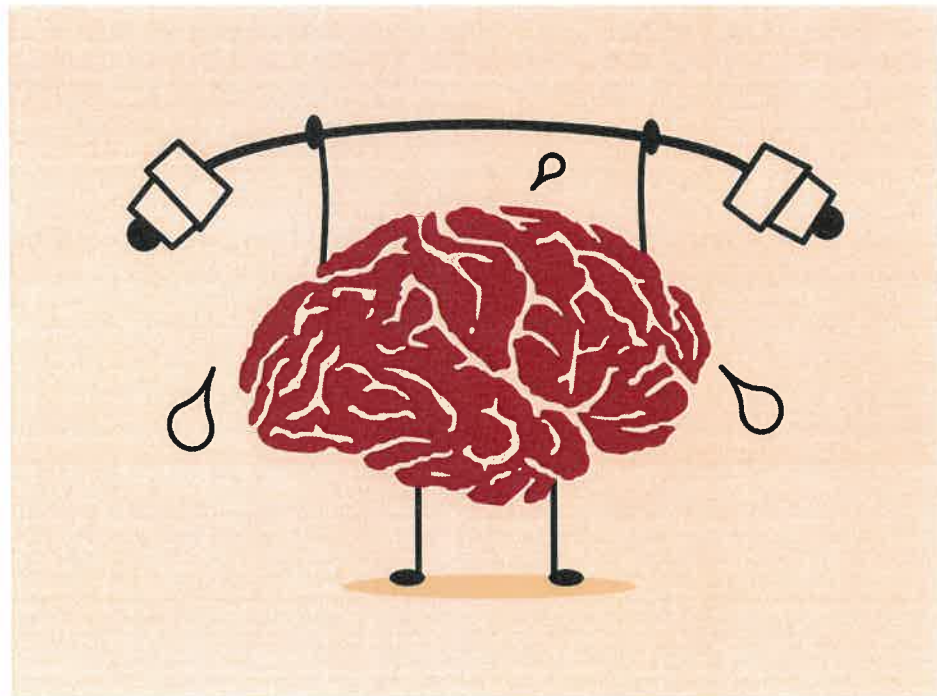


**Macy Intermediate School Presents**  
**Social Emotional Mental Health Series**  
**Parent Meeting**

**Meeting #1 Topic:** Strategies to support your child's emotional health through the adolescent years

We hope you can join us!

**Thurs. Jan. 31st | 5:30PM | [meet.google.com/shb-swfm-mjp](https://meet.google.com/shb-swfm-mjp)**  
Phone Numbers (US)+1 347-530-3839  
PIN: 882 908 676#



**Escuela Intermedia Macy Presenta**  
**Serie Sobre Salud Mental Socio-Emocional**  
**Reunión de Padres**

**Reunion #1 Tema:** Estrategias para apoyar la salud emocional de su hijo(a) durante la adolescencia

¡Esperamos que pueda acompañarnos!

**Jueves 31 de Enero | 5:30PM | [meet.google.com/shb-swfm-mjp](https://meet.google.com/shb-swfm-mjp)**  
Phone Numbers (US)+1 347-530-3839  
PIN: 882 908 676#

